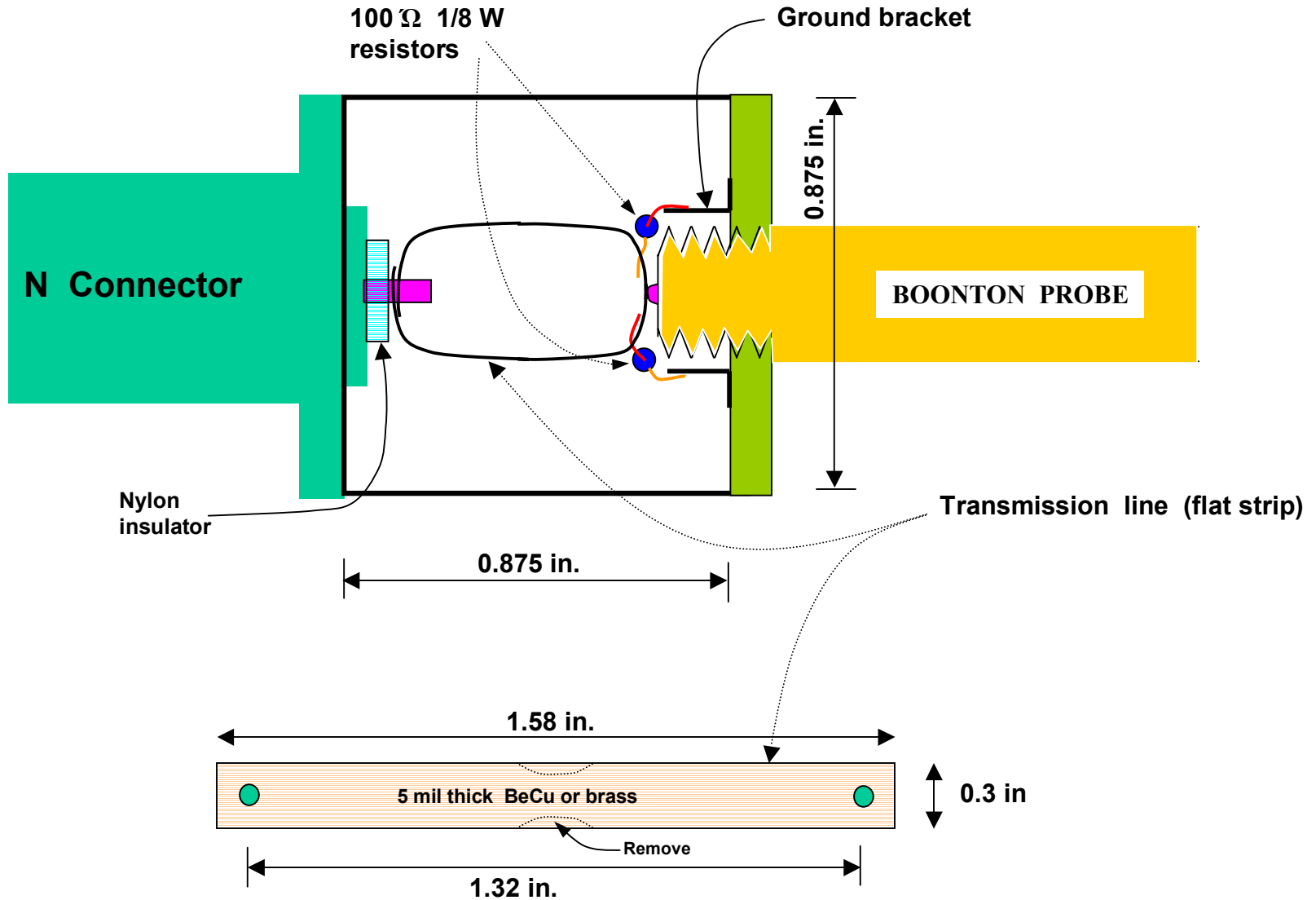
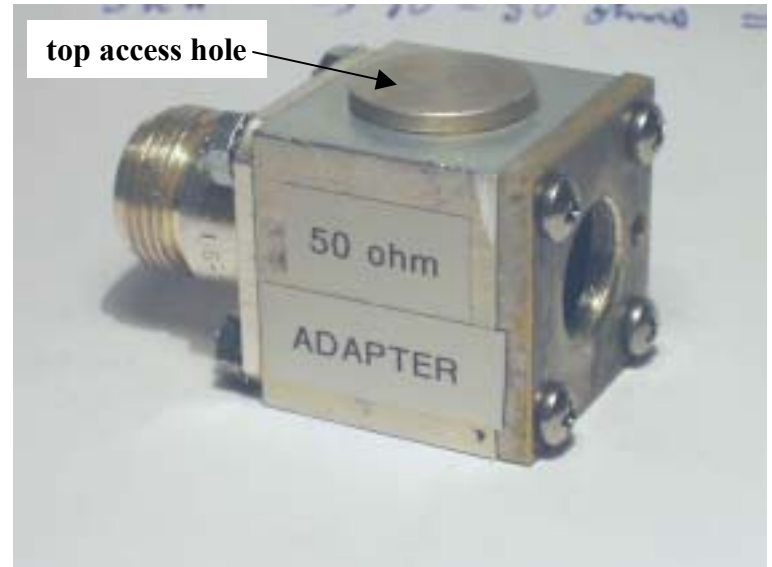


# BOONTON 50 ohm ADAPTER

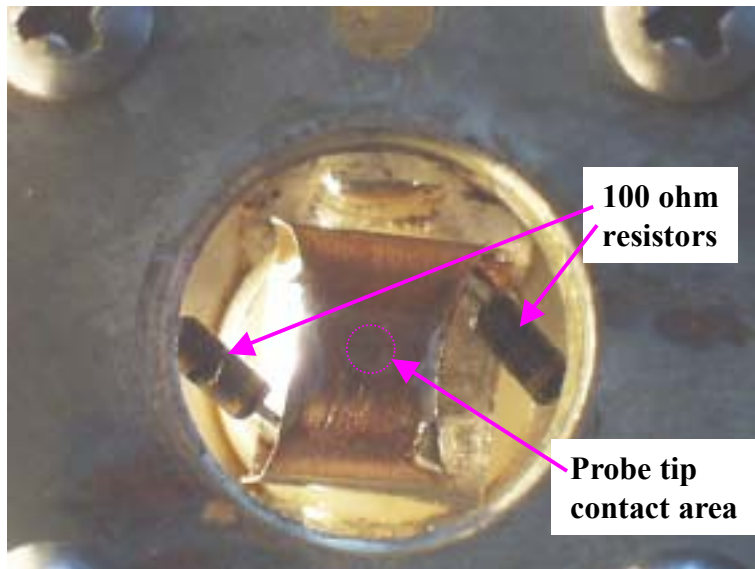




**Adapter and Boonton probe**

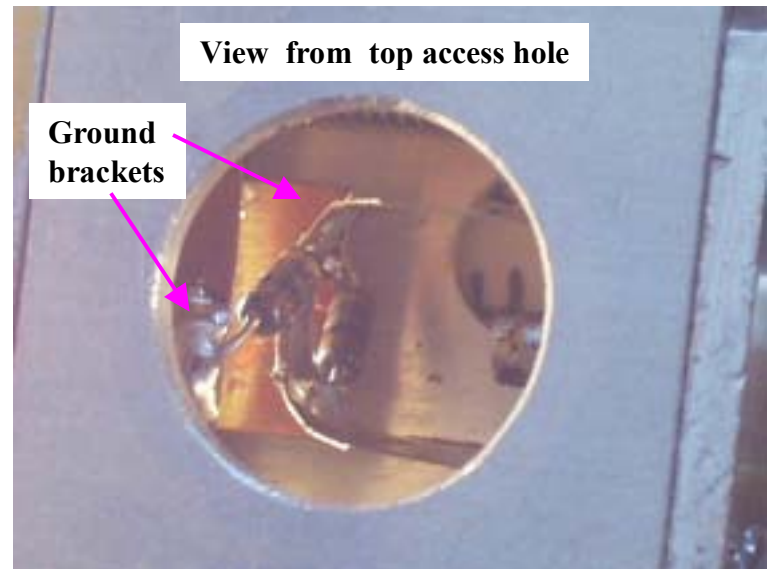


**top access hole**



**100 ohm resistors**

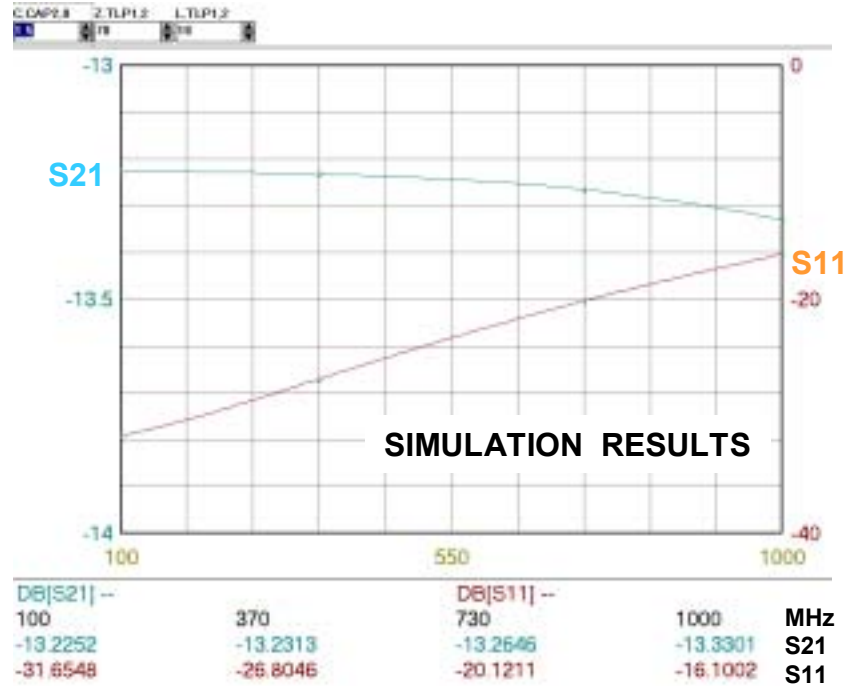
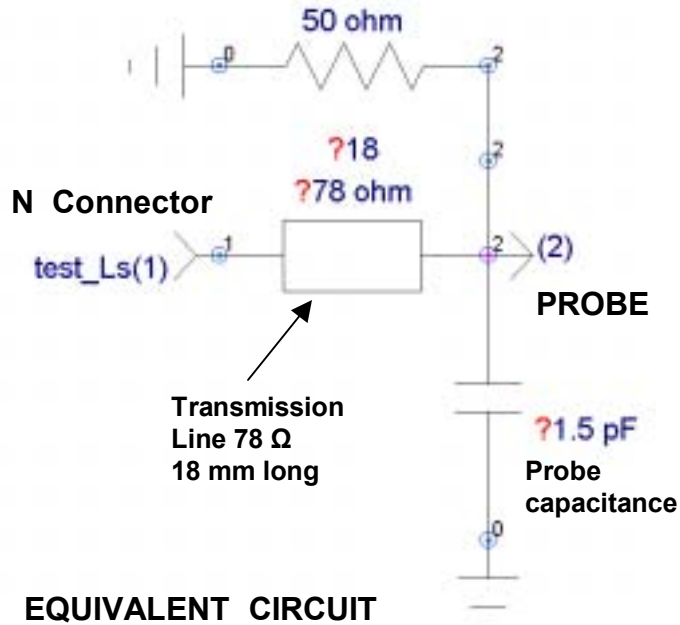
**Probe tip contact area**



**View from top access hole**

**Ground brackets**

# BOONTON 50 ohm ADAPTER



Measured S11	
MHz	dB
100	-32
370	-24
450	-23
730	-19
1000	-17

## Comparison of readings

Frequency MHz	HP435A with 8481A, 18 GHz sensor	Boonton 9200 with 1.2 GHz probe and 50 ohm adapter	Boonton 92A 18 GHz head
100	-0.1	-0.11	-0.46
200	-0.15	-0.19	-0.5
400	-0.1	-0.16	-0.46
600	-0.23	-0.23	-0.6
800	-0.3	-0.01	-0.69
1000	-0.33	0.08	-0.74
1200	-0.3	0.07	-0.74
		<b>Probe used: model # 952001</b>	<b>Probe used: model 41-4E</b>

